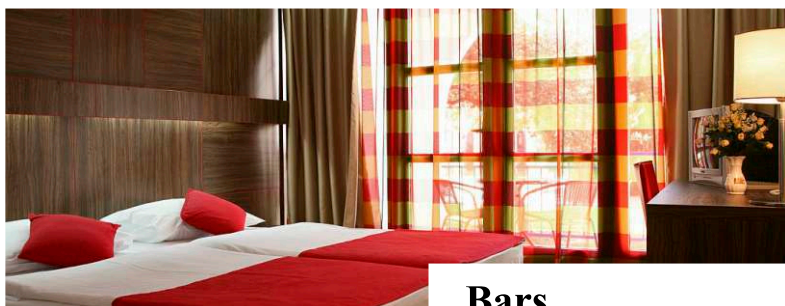




This tourist development, with its 2366 beds, architecture and setting, makes a tourist town where the Mediterranean environment, immediate vicinity of the *Slovenska Plaza* beach (1600 meters long), wide range of possibilities for active holiday and it's picturesque green areas are the major attractions thereof. It is located in the very centre of Budva, a 10-minute walk from the ancient Old Town. The hotel has a seasonal working schedule; it is open from May to the end of October.



## Bars

## Location

The Slovenska Plaza development is located in the centre of Budva, at only ten-minute walking distance from the most prominent tourist landmark of Budva, the ancient Old Town.

Full Board Restaurant with the capacity of 700 seats, inclusive of the outdoor terrace, offers a diversified national and international menu. Meals are served as a buffet or classic serving of all three meals – breakfast from 07:00 to 10:00, lunch from 12:00 to 14:00 and dinner from 18:00 to 21:00.

## Accommodation

The development has 1069 accommodation units: 865 rooms and 204 suites (110 with a kitchen). Most of the rooms and suites have a balcony. Rooms are equipped with standard hotel inventory: a bathroom with a shower and hairdryer, a fridge, air-conditioning, cable TV, a direct dial phone.

## Restaurants and Bars

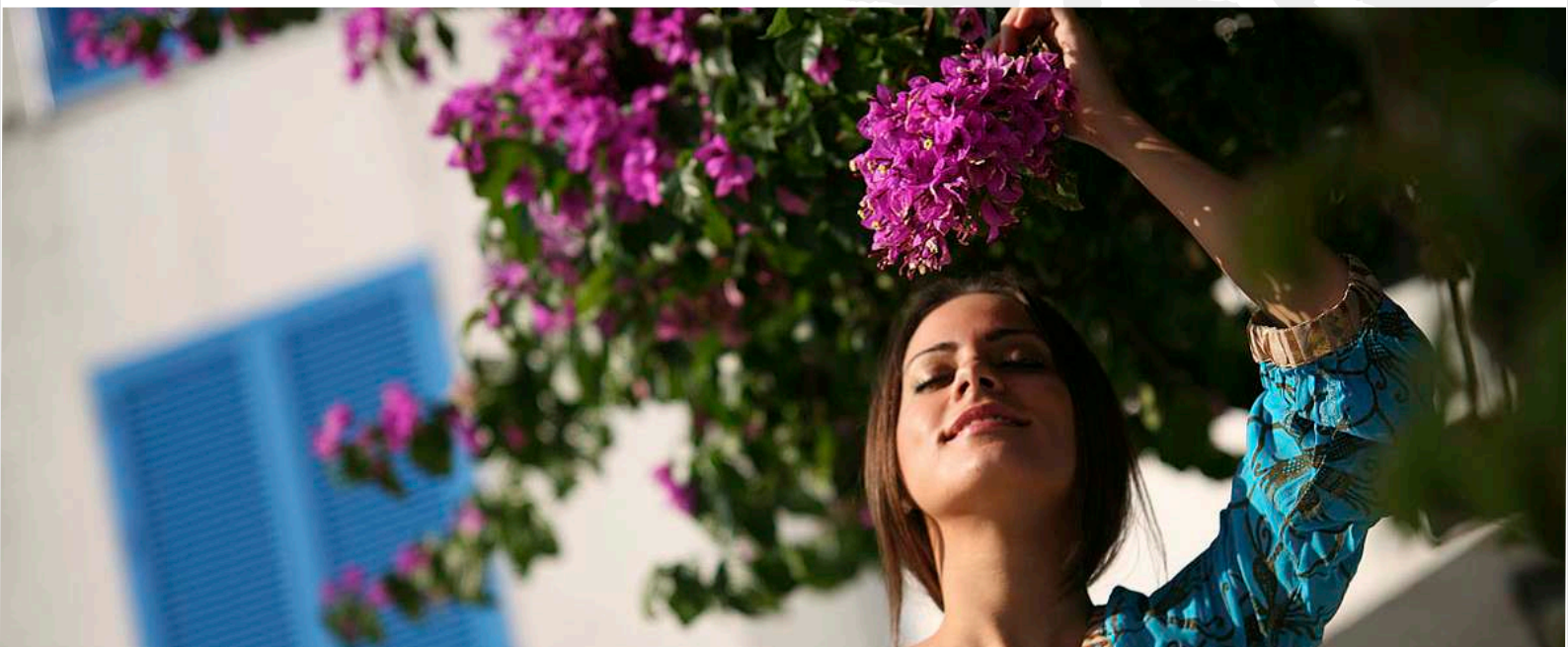
**All Inclusive Restaurant**, adjusted to the all inclusive service beneficiaries, has the capacity of 180 seats. This restaurant serves a buffet with national and international dishes. The summer terrace features an all inclusive bar serving national drinks.

**Primorski restoran** (The Seaside Restaurant) is 80 seats in capacity and is a daytime option (open until 19:00), with a la carte service at fair prices.

**Restoran Pjaca** (The Square Restaurant), placed in the central square of the development, offers a high quality a la carte service. It features music programmes each night from 21:00 to 01:00 and folklore programmes several times a week.







## Bars

**Café Habibi, Rasputin and Aperitif Bar** are places ideal for refreshment and entertainment. Attractive location, live music, salsa evenings, and fast food by fair prices.



## Sports & Recreation

For those who wish an active vacation, there are daily sports programmes: aqua aerobics, yoga, pilates, zumba. The youngest can attend organised swimming classes. Exercise in an outdoor gym and salsa classes are additional programmes of the sports entertainment free of charge.

The guests of Slovenska Plaza may have a privileged access to the wellness & spa centre of Aleksandar Hotel (a gym, sauna and whirlpool) which is in the immediate vicinity of the development.

There are 11 tennis courts nearby available for the guests at an extra charge. The same goes for the mini golf courses covering an area of 400 m<sup>2</sup>.

## Beaches & Pools

In only twenty meters from the development, there is the most famous and the longest Budva beach named Slovenska Plaza.

The development has two swimming pools, namely Kids Pool and Rondo, the outdoor salt-water swimming pools, the beach equipment being included in the price.

The youngest guests in the **Kids Pool** area may enjoy water slides, bouncy castles and entertainment all day long. Theatre shows play for kids in the evening. **Rondo Pool** offers refreshment and daytime rest and the pleasure of entertainment programme in the evening.



## Entertainment

In the evening, there are various organised theme parties: folklore evenings, salsa evenings, karaoke parties, etc.

Music programme will greet the customers of the Pjaca Restaurant, Rasputin Bar and All Inclusive Bar. In summer time there is a summer cinema at the Rondo Pool.

### ADDITIONAL AMENITIES

The hotel has an outdoor and indoor parking which may be used by its guests at an extra charge of 4€ a day \* A safe at the hotel's reception desk \* Free access to wireless network at all public points – the Reception Desk, Lobby, Pool, Play Centre \* The hotel features additional offer such as beauty and hairdresser salons, newsstand, gallery...

### HOTEL POLICY

- \* Accept all credit cards
- \* Check-in from 12:00
- \* Check-out by 10:00, late check-out at an extra charge

### POSITION

Distance from the centre of Budva: 1000 meters \* Distance from the airports: 18 km (Tivat Airport) and 65 km (Podgorica Airport) \* Distance from the bus station: 500 m \* Distance from the train station: 45 km (Bar) \* Distance from the gas station: 200 m \* Distance from the health centre: 250 m